

Gritty feel

Tearing

Itching

Stinging

Do You Have These DRY EYE Symptoms?¹

Dry Eye Disease (DED) can affect anyone and often feels like:

- Stinging, Burning, or Itching Eyes
- Sensitivity to Light (Photophobia)
- Sandy or Gritty Feeling in The Eye
- Blurred Vision or Eye Fatigue
- Redness or Excessive Tearing (Watery Eyes)

Common causes of DRY EYES^{1,7,11}

- Contact lens use
- Laser surgery or eye procedures
- Prolonged screen time or driving
- Dry environments
- Aging or hormonal changes (e.g. menopause)
- Certain medicines (e.g. antidepressants, high blood pressure medicines etc)

Myths About Eye Drops

MYTHS VS TRUTHS

Using eye drops daily will make your eyes dependent on them.



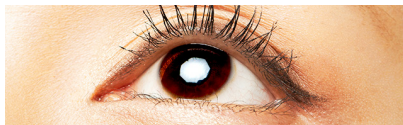
Artificial tears increase moisture and improve eye lubrication. These are not known to produce less tears and are well-tolerated for daily use.^{1,9,10}

All eye drops are the same.



Eye drops differ by their active ingredients—some soothe dryness, others fight allergies, infections or eye problems. So use the right eyedrops for your symptoms.⁹

Watery eyes mean I don't have dry eye



You can have watery eyes if you have dry eyes. Tearing of the eyes is one of the symptoms of dry eyes.¹

RXOLVE[®] is a Specially Formulated, Preservative-free Eye Lubricant for Dry Eyes.



Supports healing, even for dry sensitive eyes^{2-4,6}



Relieves inflammation^{7,8}



Soothes and protects the eyes^{2,3}



Provides long-lasting moisture^{2,3}

RXOLVE[®] Formulas



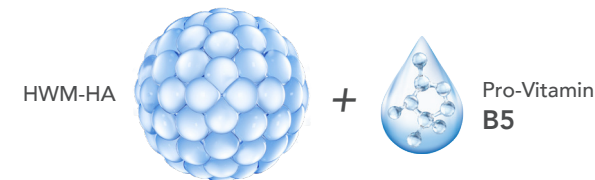
RXOLVE[®] SOOTHE EYE DROPS

Recommended For
Mild to moderate dry eye, pre/post eye surgery*

Benefits
Soothes, hydrates and promote accelerated wound healing^{2,4,6-8}

Key Ingredients

0.15% HMW-HA + 2% Pro-vitamin B5. Soothe contains both High Molecular Weight HA and Pro-vitamin B5.



RXOLVE[®] ULTRA EYE DROPS

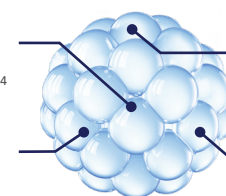
Recommended For
Moderate to severe dry eye, corneal abrasions*

Benefits
Long-lasting relief for dry, sensitive eyes^{3,7}

Key Ingredients

0.3% HMW-HA Lubricating capabilities is superior with Higher Molecular Weight HA.⁴

Protects the eye surface from damage^{2,3,4}
Long retention time on the eye surface^{4,5}



Reduces inflammation and lubricates eye surface^{4,12}

Hydrates and retains moisture^{4,5}

*Based on internal assessment and patient segmentation
HMW-HA: High Molecular Weight Hyaluronic Acid; HA: Hyaluronic Acid.

Why Choose RXOLVE®^{2-6,9,13}



Contact Lens Friendly



Sterile for Up to 1 Year After Opening



Special Filter System Protects Against Contamination Risk



Long-lasting Relief For Dry, Sensitive Eyes

Drops Delivered Through a Patented Ophthalmic Squeeze Dispenser (OSD)



TRY RXOLVE® TODAY!

Experience soothing and healing comfort vision every day.

Choose Between

RXOLVE®

SOOTHE
EYE DROPS



RXOLVE®

ULTRA
EYE DROPS



your eyes will feel the difference.

* High Molecular Weight Hyaluronic Acid + Pro-Vitamin B5
** High Molecular Weight Hyaluronic Acid

References: 1. Mayo Clinic. Accessed through: <https://www.mayoclinic.org/diseasesconditions/dry-eyes/symptoms-causes/syc-20371863>. Last accessed: 20 July 2025. 2. Rxolve Soothe IFU (Instruction for use) 3. Rxolve Ultra IFU (Instruction for use). 4. Nguyen L et al. Transl Vis Sci Technol 2023. 5. Guarise C et al. J Mech Behav Biomed Mater 2023. 6. Köppe MK, et al. Diagnostics 2024;14(11):1097. 7. Sabur H, et al. Türkiye Klinikleri Journal of Ophthalmology. 2023. 8. Sabur H, Acar M. Int Ophthalmol 2023;43:3461-3469. 9. Cleveland Clinic. Available at <https://my.clevelandclinic.org/health/treatments/eye-drops>. Accessed 28 Jul 2025. 10. American Academy of Ophthalmology. Available at <https://www.aaopt.org/eyehealth/ask-ophthalmologist-q/will-too-many-artificial-tears-worsen-dryeye#:~:text=Question%3A%20dry%20eye%20with%20your%20ophthalmologist.> Accessed 31 Jul 2025. 11. NEI. <https://www.nei.nih.gov/learn-about-eye-health/eye-conditions-and-diseases/dry-eye/causes-dry-eye#:~:text=Medicines,like%20lupus%20or%20rheumatoid%20arthritis.> Accessed 28 Jul 2025. 12. Lee BM, et al. Biomater Res. 2021 Aug 30;25(1):27. 13. International Pharmaceutical Industry. Available at: <https://internationalpharma.com/apta-pharmas-preservative-free-multi-dose-ophthalmic-squeeze-dispenser-launched-us/>. Accessed 12 Aug 2025.

This educational leaflet is sponsored by Rxilient

RXILIENT

1 Coleman Street #08-01,
The Adelphi, Singapore 179803
(65) 6990 5341



SCAN
to visit our
website

EXPERIENCE NEXT-LEVEL EYE COMFORT

RXOLVE®



RXOLVE®

SOOTHE
EYE DROPS

RXOLVE®

ULTRA
EYE DROPS