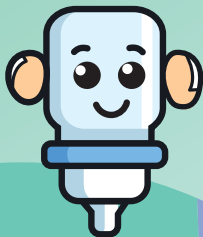


Hold me straight down (90°)  
when you use me.



Gently squeeze  
my middle with  
steady pressure.  
Don't squeeze  
me upright —  
I might spit out air.

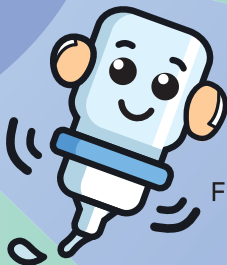


**RXOLVE**<sup>®</sup>  
Eye Drops  
**Simple  
squeeze,  
precise  
drops.**

Give me a  
moment to  
'breathe'  
before your  
next drop.



Flick off any extra  
drop at my tip.



Put my cap back on and push  
it down, no need to screw it!



# RXOLVE<sup>®</sup> Eye Drops

Patented OSD bottle keeps preservative-free eye drops sterile up to 1 year after opening.

Easy to use.<sup>1-3\*</sup>



Preservative  
-Free



Remains sterile  
up to one year



Great for  
Sensitive Eyes



Use me directly  
while wearing  
your contact  
lenses

\* OSD: Ophthalmic Squeeze Dispenser

**Reference:** 1. Rxolve<sup>®</sup> Soothe IFU (Instruction for use) 2. Rxolve<sup>®</sup> Ultra IFU (instruction for use) 3. Aptar Ophthalmic Squeeze Dispenser technology platform. Available at: Ophthalmic Squeeze Dispenser (OSD) Technology Platform. Accessed 23 July 2025.

**RXILIENT**

1 Coleman Street #08-01,  
The Adelphi, Singapore 179803  
(65) 6990 5341

RXO/SEA/ DOC-161/2025/rev.01